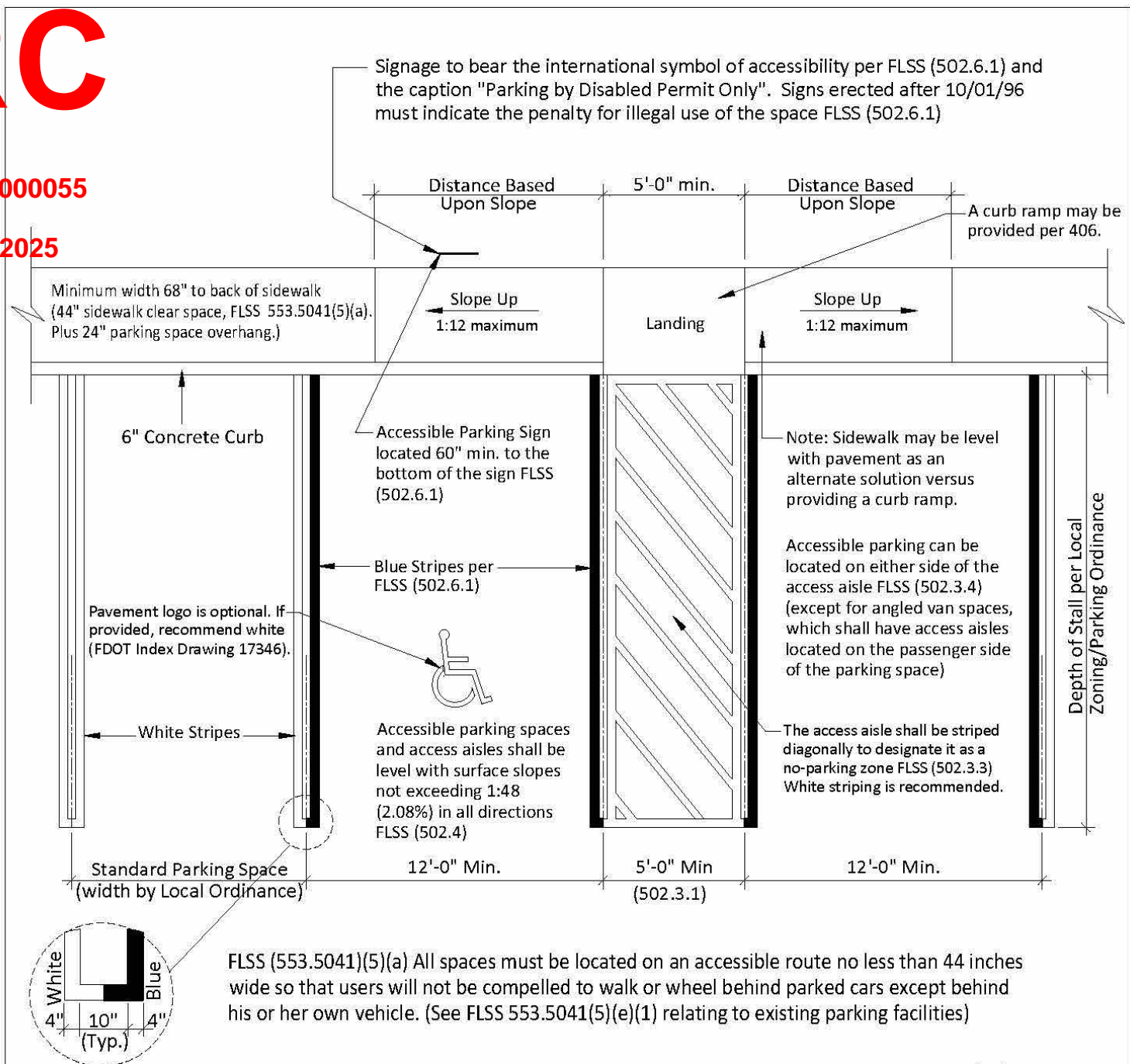


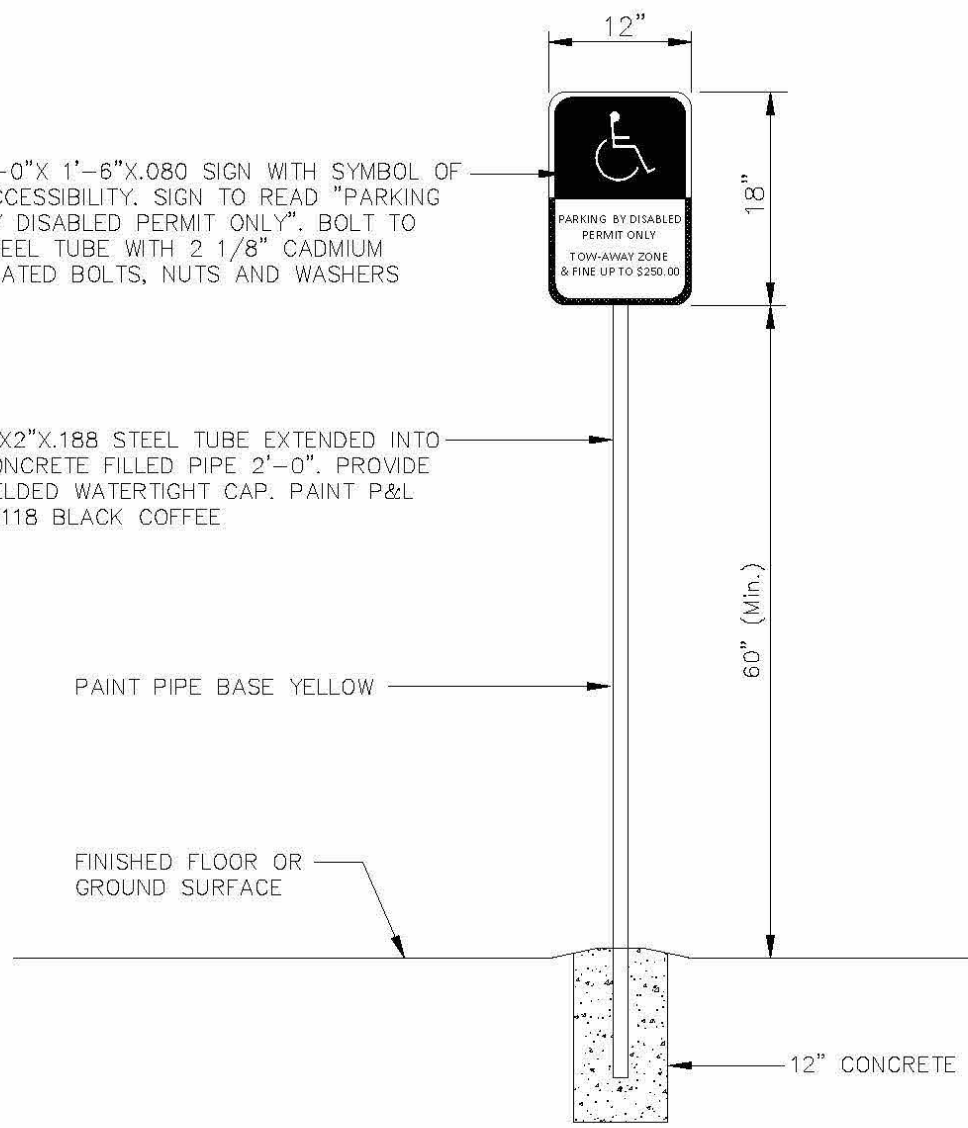
PZ23-12000055  
04/16/2025



Recommended Accessible Parking Space(s)  
Design for Double Line Requirements N.T.S.

THIS TECHNICAL ASSISTANCE DOCUMENT IS INTENDED TO PROVIDE INFORMAL GUIDANCE AND DOES NOT CONSTITUTE A LEGAL INTERPRETATION OF STATUTORY OR REGULATORY CRITERIA.

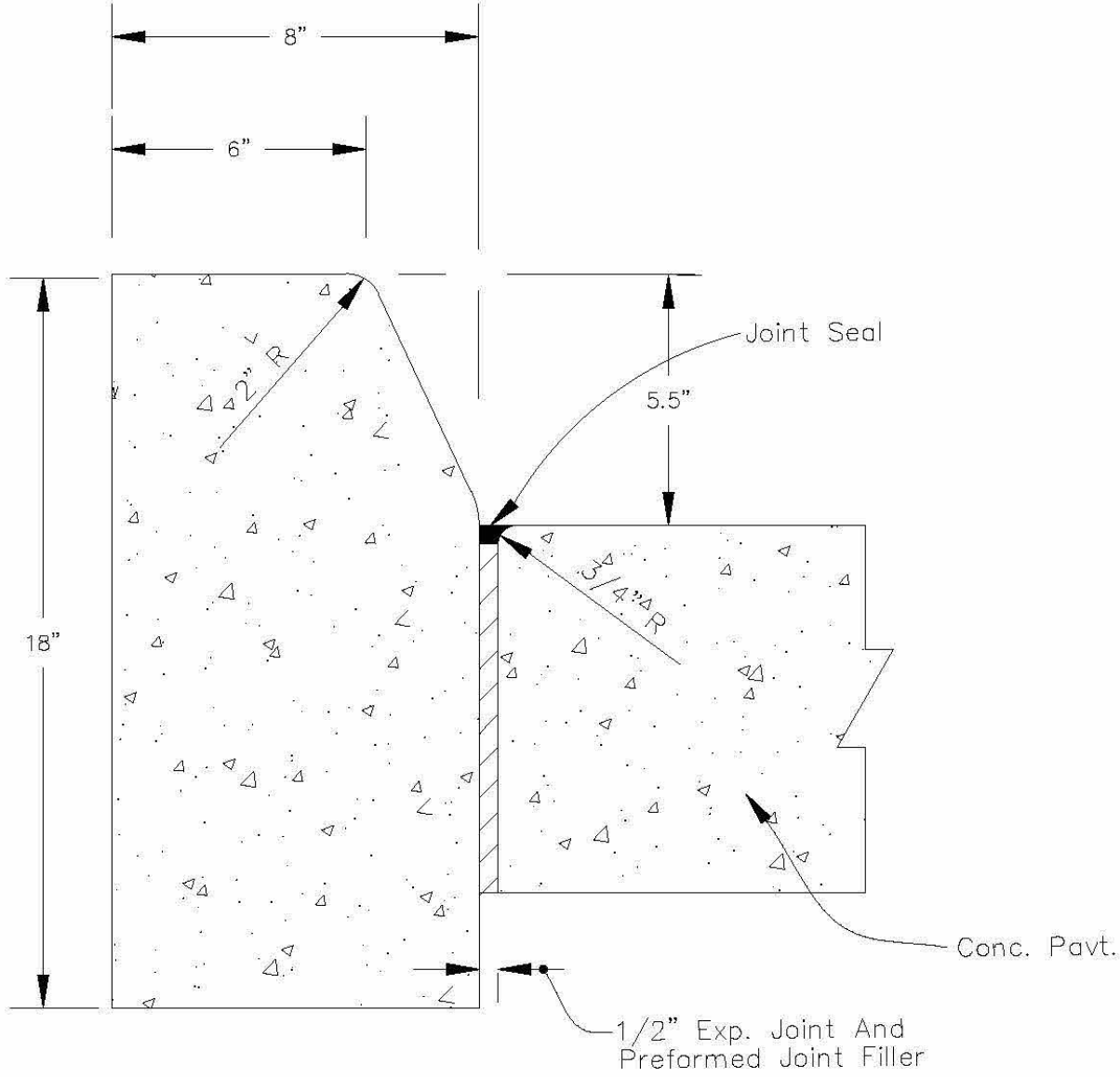
ENGINEERING STANDARDS 2022			
REVISIONS		ENGINEERING DIVISION	ACCESSIBLE PARKING SPACES
BY	DATE		
		CITY OF POMPAÑO BEACH	
			DATE: MAY 2022 DWG. NO. 300-4
		SCALE: N.T.S.	



ACCESSIBLE PARKING SPACE SIGN  
N.T.S.

SIGN NOTE  
ACCESSIBLE PARKING SPACES SHALL BE POSTED WITH A FIXED PARKING SIGN NO LESS THAN 60" MIN. TO THE BOTTOM OF THE SIGN AND WHICH BEARS THE INTERNATIONAL SYMBOL OF ACCESSIBILITY MEETING THE REQUIREMENTS OF THE STANDARDS AND THE CAPTION "PARKING BY DISABLED PERMIT ONLY." AND MUST INDICATE THE PENALTY FOR ILLEGAL USE OF THE SPACE.

ENGINEERING STANDARDS 2022			
REVISIONS		ENGINEERING DIVISION	ACCESSIBLE SPACE SIGN
BY	DATE		
		CITY OF POMPAÑO BEACH	
			DATE: MAY 2022 DWG. NO. 300-5
		SCALE: N.T.S.	

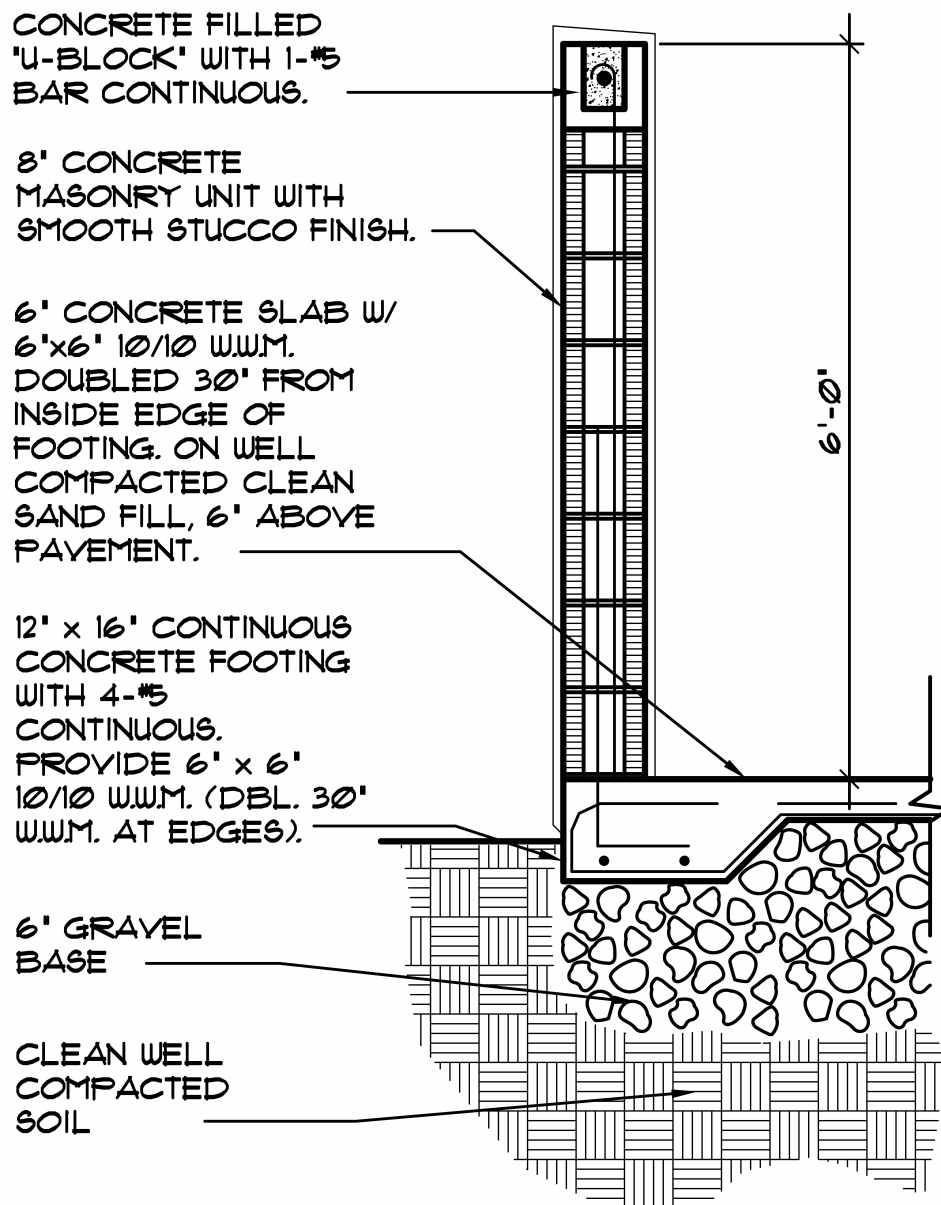
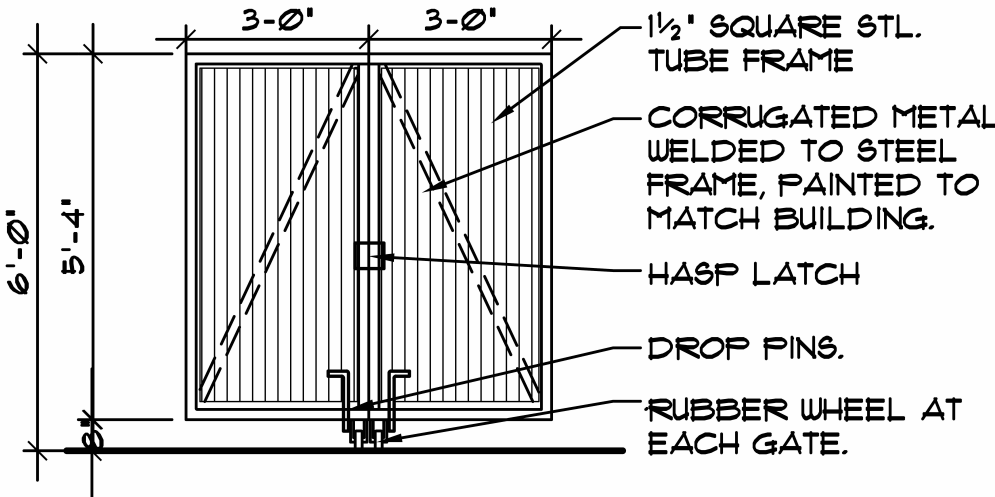


TYPE "D" CURB

NOTE  
FOR USE ADJACENT TO CONCRETE OR FLEXIBLE PAVEMENT, CONCRETE SHOWN. EXPANSION JOINT, PREFORMED JOINT FILLER AND JOINT SEAL ARE REQUIRED BETWEEN CURBS AND CONCRETE PAVEMENT ONLY.

CONCRETE CURB DETAIL

ENGINEERING STANDARDS 2022			
REVISIONS		ENGINEERING DIVISION	CONCRETE CURB
BY	DATE		
S.S.	01-2014	CITY OF POMPAÑO BEACH	
S.S.	08-2015		DATE: MAY 2022 DWG. NO. 300-2
S.S.	07-2016	SCALE: N.T.S.	



Revision		
REV	DATE	BY
DRC	11/20/2025	J.A.G.

PROPOSED WAREHOUSE FOR:  
REGANZANI GROUP LLC  
VACANT PROPERTY, SW 3RD STREET,  
POMPAÑO BEACH, FL, 33069

SEAL: AR 0017852  
LUIS A. REGANANI

DRAWN:	Author
CHECKED:	Checker
DATE:	11/07/2023
SCALE:	AS NOTED
JOB. NO.:	023-042
SHEET:	
.SP 1.2	
OF:	SHEETS: